

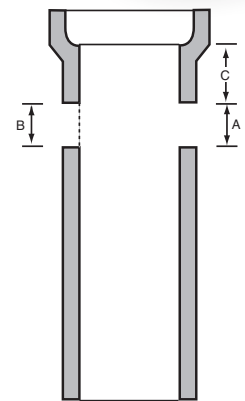
# Clay Sump Pipe and Meter Boxes

## Pipe With Holes and Knockouts

Logan manufactures pipe with holes in the side of the barrel and a knockout on the opposite side. The knockout may be left in place or removed as needed. This pipe can be used as sump tile, catch basins and grease traps. Holes are cut 6" in diameter to accommodate a 4" pipe for inlet or outlet.



Barrel I.D.	Height of Barrel	Hole Size A	Knockout Size B	Hole Placement C	Weight per Piece (lbs.)	Pack Data
8"	24"	6"	6"	5"	60	32
10"	24"	6"	6"	5"	100	18
12"	24"	6"	6"	5½"	125	18
15"	24"	6"	6"	6"	200	8
18"	24"	6"	6"	6½"	320	8
21"	24"	6"	6"	6½"	440	Each
24"	24"	6"	6"	6½"	370	Each

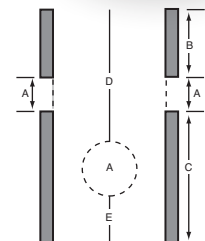


## Sump Tile

Clay tile is the ideal product to use for basement sumps. Once in place, it will last a lifetime. This product is manufactured with four knockouts. The knockouts are 6" in diameter and located at the three, six, nine and twelve o'clock positions at two different heights. You may remove any or all of the knockouts and turn the product end-over-end to achieve maximum installation flexibility.



Barrel I.D.	Height of Barrel	Knockout					Weight per Piece (lbs.)	Pack Data
		A	B	C	D	E		
15"	24"	6"	8"	10"	10"	8"	125	8
18"							170	8
15"	30"	6"	8"	16"	16"	14"	160	8
18"							210	8



## Logan Clay Products LLC

loganclay.com • loganclaypipe.com • loganclaymasonry.com • no-digpipe.com  
 info@loganclay.com • 800-848-2141 • 740-385-2184 • Fax: 740-385-9336